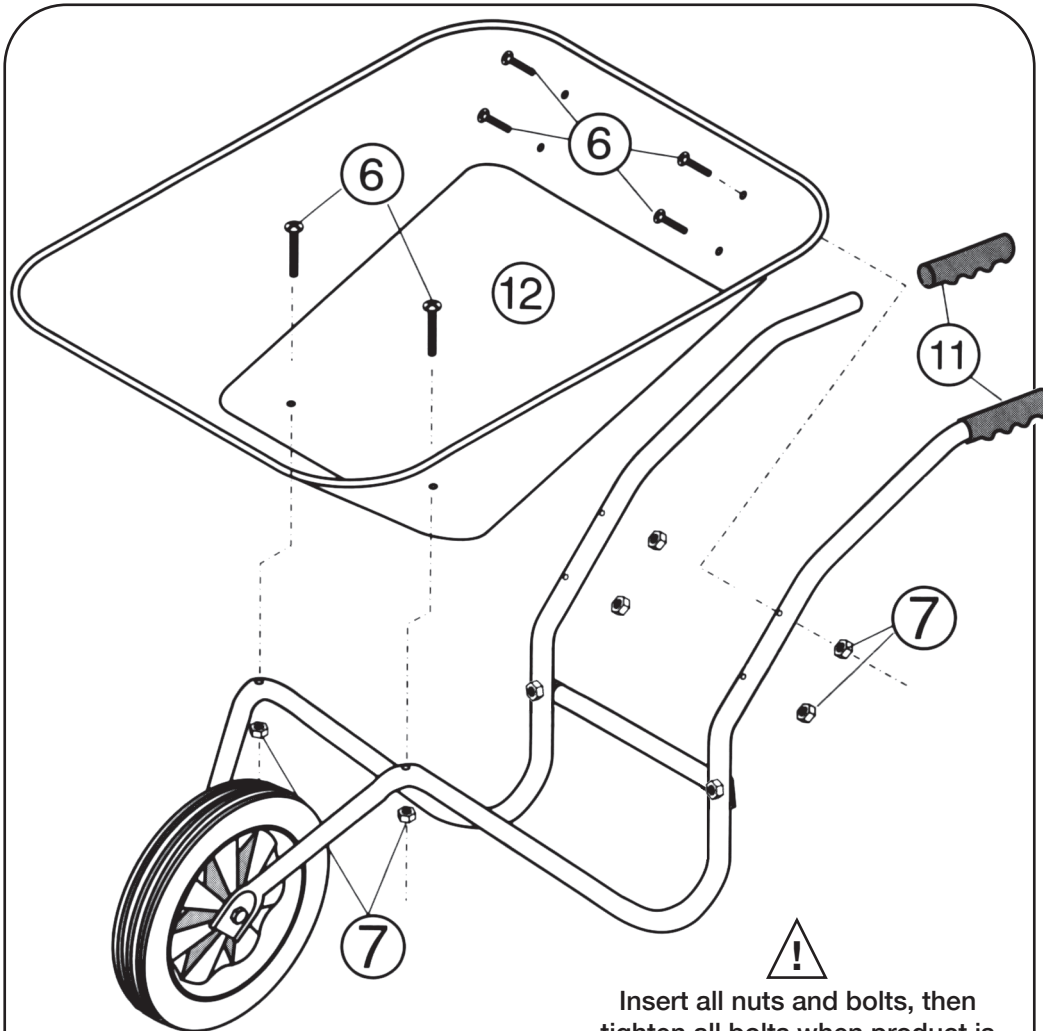


3. Main body assembly



Insert all nuts and bolts, then
tighten all bolts when product is
assembled with main body.

See our other brands



Correct additional or replacement parts can be obtained from
BullBarrow Products

3 Malthouse Road Tipton West Midlands DY4 9AE
Tel: 0121 520 2345 Fax: 0121 557 3680
Email: sales@bullbarrow.co.uk

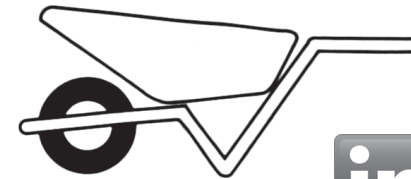


bullbarrow

Picador Self Assembly Wheelbarrow

Assembly Instructions

(please read carefully before attempting to assemble)
(recommended 2 person assembly)



Find us on



**Important: keep these instructions
for future reference**

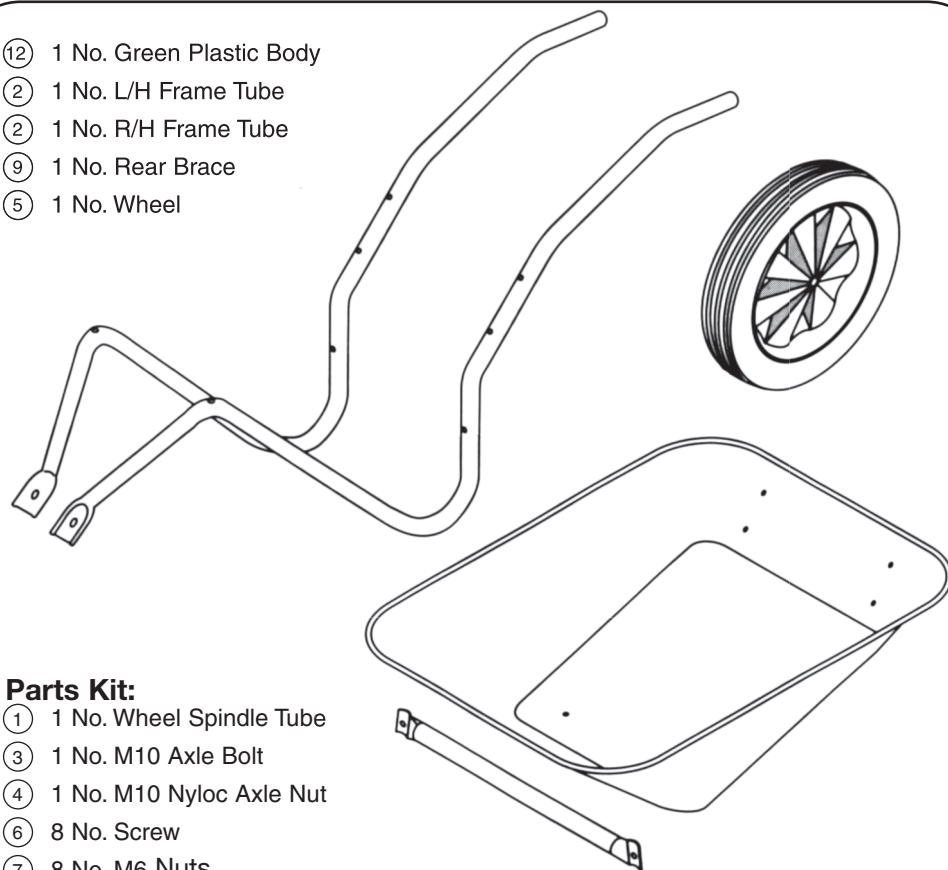
- Product weighs 8kg approx - 100kg load •
- Do not lift weights beyond your physical capabilities •

BullBarrow Products

3 Malthouse Road Tipton West Midlands DY4 9AE
Tel: 0121 520 2345 Fax: 0121 557 3680
Email: sales@bullbarrow.co.uk

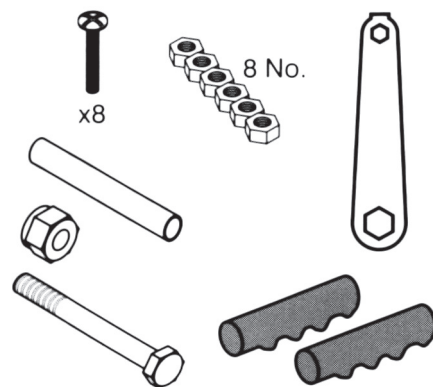
Contents

- ⑫ 1 No. Green Plastic Body
- ② 1 No. L/H Frame Tube
- ② 1 No. R/H Frame Tube
- ⑨ 1 No. Rear Brace
- ⑤ 1 No. Wheel



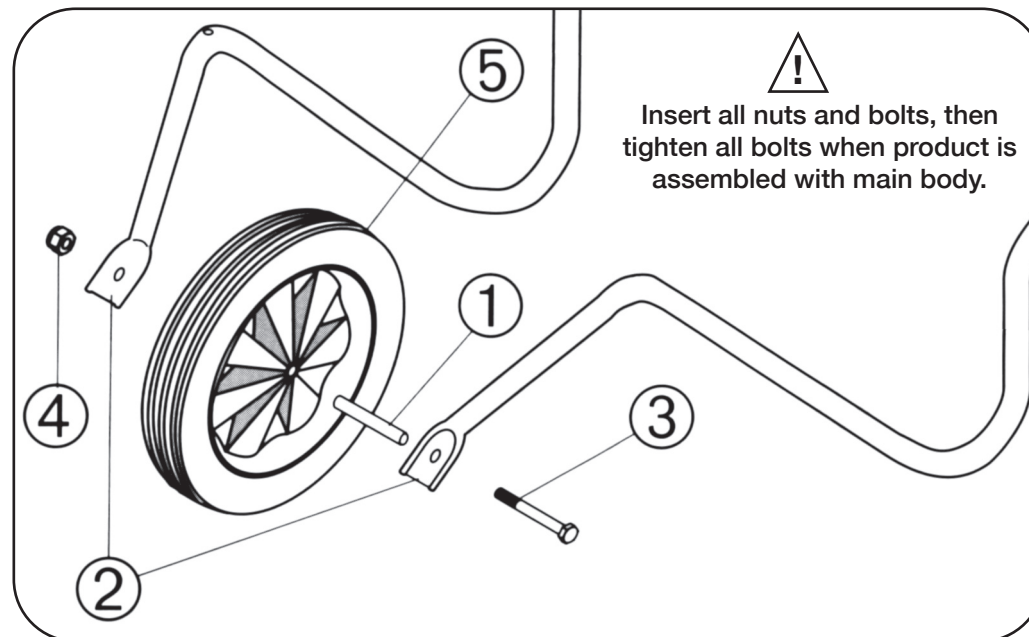
Parts Kit:

- ① 1 No. Wheel Spindle Tube
- ③ 1 No. M10 Axle Bolt
- ④ 1 No. M10 Nyloc Axle Nut
- ⑥ 8 No. Screw
- ⑦ 8 No. M6 Nuts
- ⑪ 2 No. Hand Grips
- ⑧ 2 No. Pressed Steel Spanner/Screwdriver



Check contents against contents list after unpacking

1. Mount wheel assembly



2. Leg and handle tube assembly

